

## Plot 10 Silvermere House

£360,000

Heron's Lake, Theale, RG7 5JG



Incentives available – enquire with our team today,

Silvermere House offers this stylish second-floor, two-bedroom apartment that combines comfort and convenience in a prime location. This home features a light-filled open-plan kitchen, dining, and living area with large windows and elegant finishes. Two spacious bedrooms include a principal with an ensuite, complemented by a modern bathroom, ample storage, and well-planned layouts. A private balcony overlooking the scenic lake completes this home. Ideal for first-time buyers, downsizers, or anyone seeking a low-maintenance home in a vibrant community.

Interested? Please contact our New Homes team to find out more, or to book a viewing.

[newhomes@haslams.net](mailto:newhomes@haslams.net)  
0118 960 1010

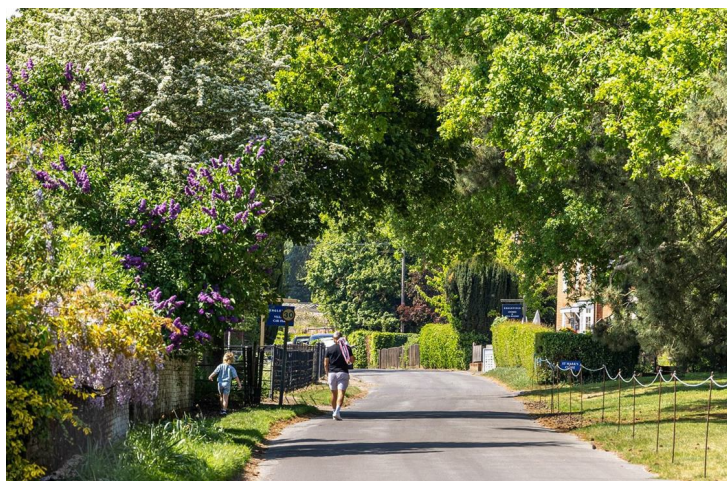




- Stunning 2 bedroom apartment with a parking space
- Peaceful lakeside setting
- Blossoming new community
- Convenient location near schools, shops, leisure facilities and town centre
- Excellent transport links with Theale Station and the M4 close by
- Countryside walks and rural tranquillity with strong connectivity







## Further details

Council tax band New Build

Agent's notes

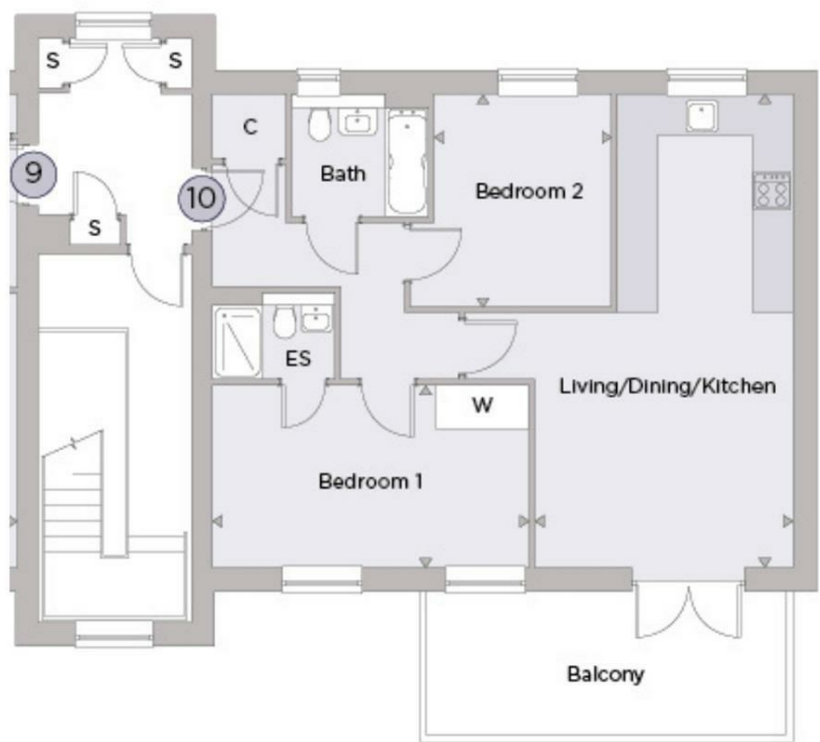
Estimated build completion Autumn 2025

Service Charge: Estimated £1.49 per sq ft

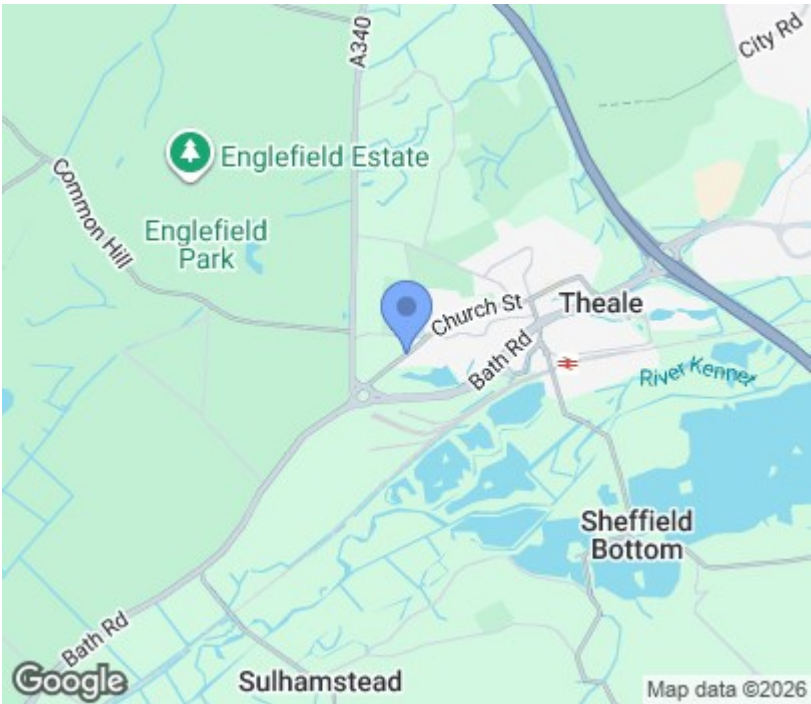
Reservation Fee: Please note that to secure an offer on this property, you will be required to pay a fee of £500. For specific terms, please contact our office.

Please note some images are CGIs and are to be used as a guide only.

Floorplan



Room	Dimensions (feet & inches)
Living/ kitchen/ dining	25'0" x 13'8"
Bedroom 1	16'9" x 9'8"
Bedroom 2	11'2" x 9'5"



Please contact our New Homes team to find out more, or to book a viewing.

[newhomes@haslams.net](mailto:newhomes@haslams.net)  
0118 960 1010

The specifications outlined in this brochure are indicative only. Developers reserve the right to make any alterations to the specifications without warning. Whilst these particulars are prepared with all due care, the information is intended as a preliminary guide only. The computer generated images and photographs do not necessarily represent the actual finishings/elevation or treatments, furnishings and fittings at this development. Room measurements are approximate only. Floor plans, dimensions and specifications are correct at the time of print. Nothing contained in this brochure shall constitute or form part of any contract. Information contained in this brochure is accurate at the time of going to print.